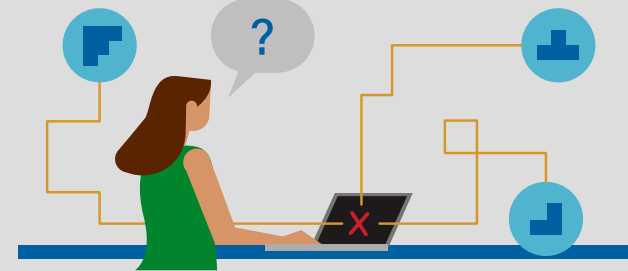


Baltimore Needs Linked Data to Effectively Support All Youth

Young people need cohesive support across the different parts of their lives to help them achieve their goals. In Baltimore, the numerous agencies and organizations that serve youth and families operate in siloes. Lack of coordination and information-sharing make it difficult to see the full picture of what young people need, identify service gaps, or address historic disparities. The Baltimore Youth Data Hub enables agencies and organizations to securely share and access critical information about the populations they serve, helping them to more effectively and equitably support Baltimore's children, youth, and families.

People currently face numerous barriers to successfully using data in support of youth:



INFORMATION IS DECENTRALIZED

Data is spread across multiple agencies and organizations. It may not be public, current, or available in a format to support usability.



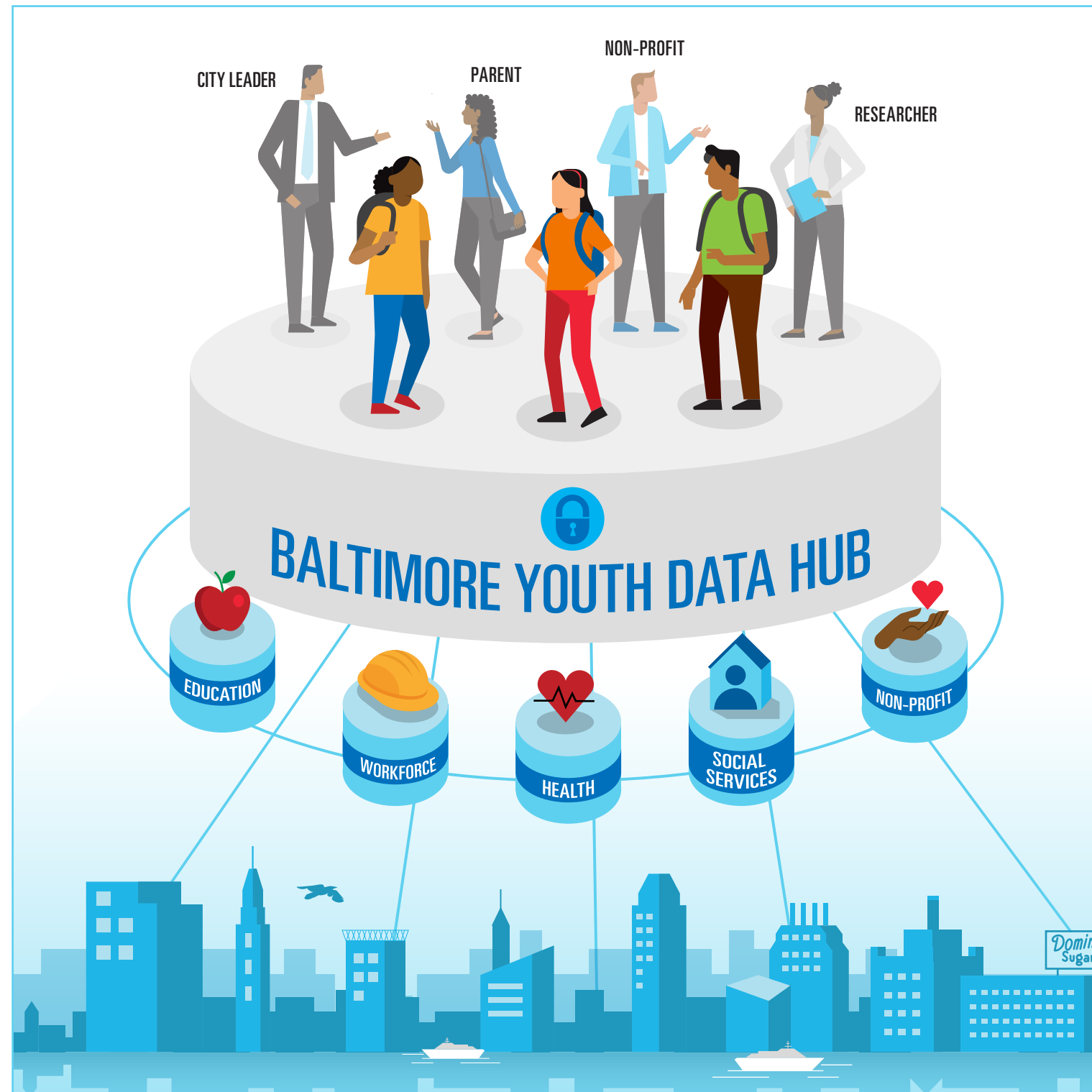
GETTING AND USING DATA IS CHALLENGING

It takes significant capacity and resources to access, process, and use existing data—putting critical information out of reach for many non-profits, advocates, and community members.



PEOPLE CAN'T ANSWER BIG-PICTURE QUESTIONS

These barriers make it difficult to understand young people's needs, identify gaps or overlaps in service, and coordinate supports.



By bridging information gaps, the Baltimore Youth Data Hub will give people the data they need to address racial disparities, strengthen support systems, and improve outcomes for young people and families.



FAMILIES AND COMMUNITIES

Families and communities can get information about city programs and have access to data to ensure their needs are met.



NON-PROFITS AND ADVOCATES

Nonprofits and advocates can access critical information on youth needs to design effective programs and connect young people with critical supports.



CITY LEADERS

City leaders can work together to coordinate services, allocate resources, and address historic inequities, and track the overall well-being of young people in Baltimore.



RESEARCHERS

Researchers can request high-quality, de-identified data that captures information across multiple sectors to identify effective supports for youth and share best practices with leaders and practitioners.

FOUNDATIONAL PRINCIPLES

These ideas are embedded in the Hub's design and will continue to guide how people use data.



UNDERSTANDING HISTORICAL CONTEXT



PRIORITIZING TRANSPARENCY AND TRUST



STRENGTHENING SYSTEMS AND COORDINATING SERVICES



ELIMINATING RACIAL DISPARITIES AND INEQUITIES



ENSURING DATA PRIVACY