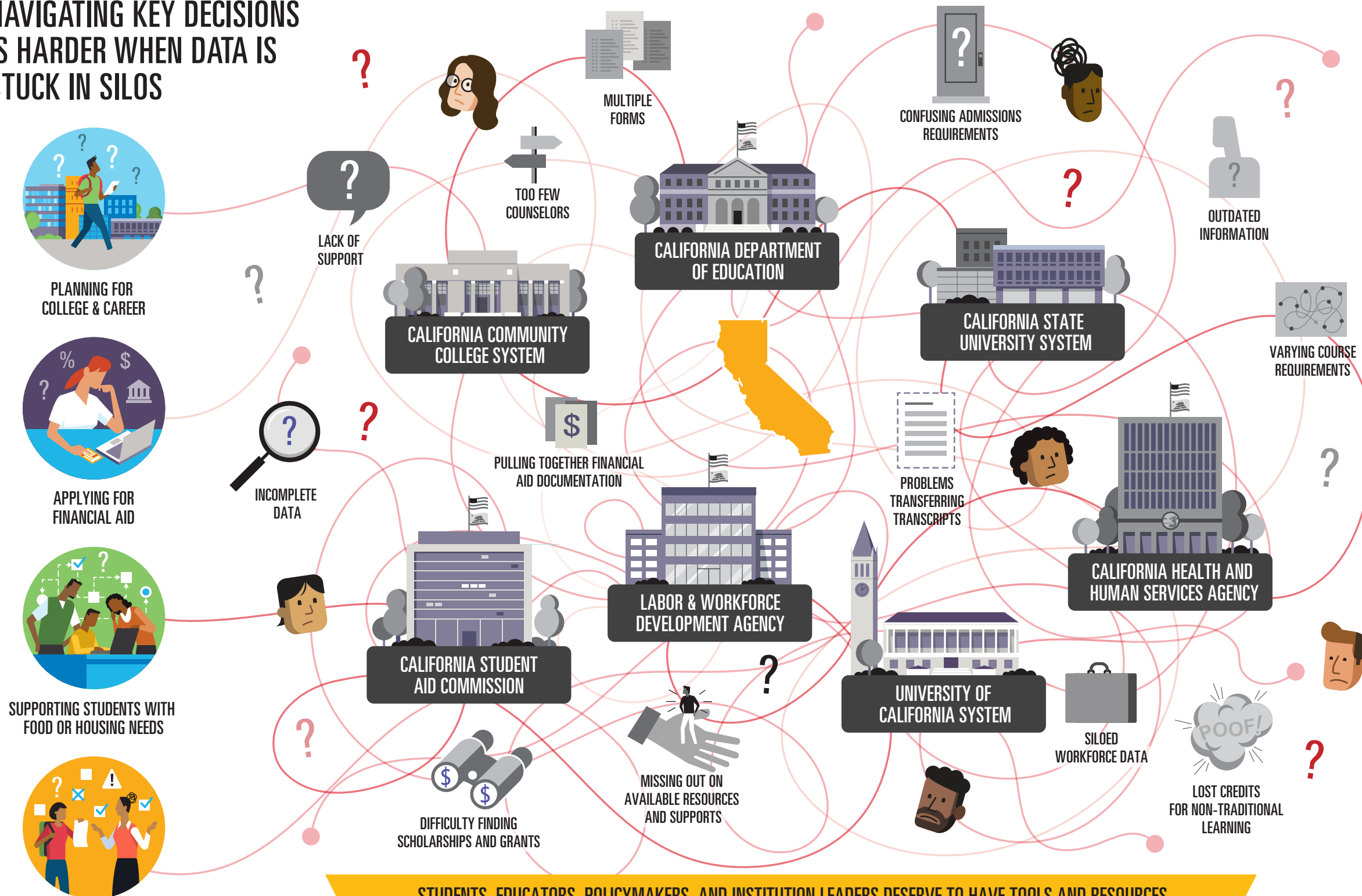


Californians Need Data to Chart Their Paths to Success

Individuals need data to navigate the road to college, career, and beyond. In California, there are multiple institutions that collect information on education, employment, and available supports like financial aid. These entities collect different data for different purposes and operate largely in silos. The resulting data landscape is disjointed, confusing, and fails to meet student needs. When data is shared and used effectively, individuals are connected to the information and resources they need to achieve their goals.

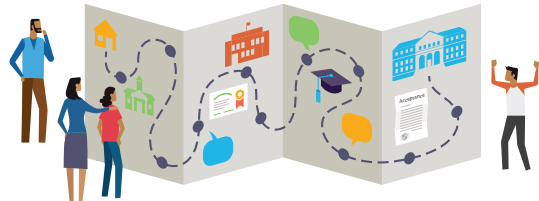
NAVIGATING KEY DECISIONS IS HARDER WHEN DATA IS STUCK IN SILOS




- PLANNING FOR COLLEGE & CAREER
- APPLYING FOR FINANCIAL AID
- SUPPORTING STUDENTS WITH FOOD OR HOUSING NEEDS
- TRANSFERRING CREDENTIALS BETWEEN INSTITUTIONS

STUDENTS, EDUCATORS, POLICYMAKERS, AND INSTITUTION LEADERS DESERVE TO HAVE TOOLS AND RESOURCES AT THEIR DISPOSAL THAT HELP THEM ANSWER THEIR CRITICAL QUESTIONS. WHEN STATES BREAK DOWN DATA BARRIERS FROM EARLY CHILDHOOD THROUGH THE WORKFORCE, INDIVIDUALS GET THE SUPPORT THEY NEED TO SUCCEED.


A STATEWIDE SOLUTION LAYS THE GROUNDWORK FOR A PATH TO SUCCESS

- 


UNDERSTANDING APPLICATION REQUIREMENTS

Students need guidance in selecting courses that most align with their goals and also when transferring from a two-year to a four-year institution.
- 

PAYING FOR COLLEGE

With access to comprehensive information on financial aid options and application processes, students and families are better positioned to afford college.
- 

CONNECTING STUDENTS WITH SUPPORTS

When institutions know which students are eligible for social service support, they can connect those students with dedicated resources.
- 

ENSURING STUDENTS GET CREDIT FOR THEIR SKILLS

By ensuring that information about credentials and badges is included on transfer students' transcripts, institutions can help students achieve their career goals.