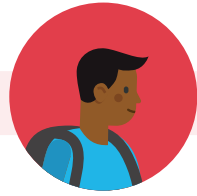


# Data Linkages Enable Individual Support and Shared Success

Individuals, including young people, contend with daily successes and challenges and face unique barriers to achieving their goals. These issues don't disappear as people move across different settings, including when they step into the classroom; out-of-school factors can influence their academic performance, and vice versa. Individuals need 360-degree support in order to succeed. One way to provide this support is by linking data across systems and sectors, including education, health, social services, and transportation. System leaders can use this information to understand high-level trends and identify best practices at work. Educators, advocates, and families can also use this information to have meaningful conversations about what individuals need and how to make sure they get it. When all the important people in their lives have appropriate access to information, individuals get the support they need to succeed.

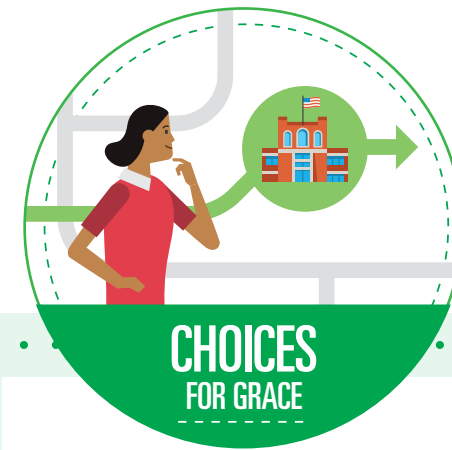


## FIRST DAY OF SCHOOL

Kindergartener Caleb is starting elementary school.

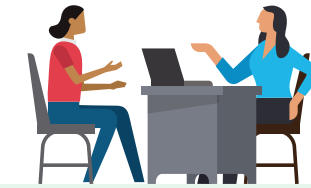


Policymakers use data to identify common health needs of students in Caleb's community that might impact their learning.



## CHOICES FOR GRACE

Grace uses this information to match her education with a career path aligned to her goals.



Grace has the credentials she needs to interview for a job aligned to her goals.



GRACE HAS THE SKILLS SHE NEEDS TO STEP INTO A NEW ROLE AND SUCCEED



## STUDENTS IN FOSTER CARE

5th grader Max is transitioning to an out-of-home care setting.



## SUPPORT FOR CALEB

Using these insights, the district ensures that all students receive a vision test.

System leaders see that Maria is chronically absent and look into what commonly causes students like Maria to miss school.



## CONTINUITY FOR MAX

Max's caseworker uses this information to ensure he remains in his same class and school throughout his transition.



Caleb gets the health support he needs to participate in class and succeed academically.



He also connects Max to an out-of-school mentorship program, which gives him the social support he needs to cope with changes to his home life.



CALEB IS SET UP FOR SUCCESS FROM THE START



## CHRONIC ABSENTEEISM

9th grader Maria is new to her school and missing a lot of days.

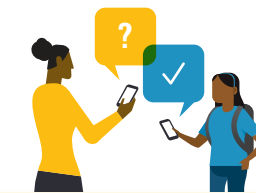


Max's caseworker has secure access to his academic data, which he uses to see how Max is doing in school and where he needs help.



## SERVICES FOR MARIA

Maria's parents, teacher, and advocate all work together to identify why she's not making it to school and get her the support she needs to attend.



Maria's advocate remains in contact with Maria and her family, allowing them to make sure her needs are being met going forward.

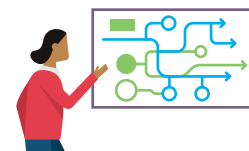


THERE ARE FEWER BIG CHANGES IN MAX'S LIFE



## CHOOSING A CAREER

Community college student Grace is unsure what career she should pursue after graduating.



Grace's school provides an online tool that allows students like Grace to explore aggregate data on past graduates' education, workforce, and salary outcomes by program.



MARIA IS ON TRACK FOR HIGH SCHOOL SUCCESS