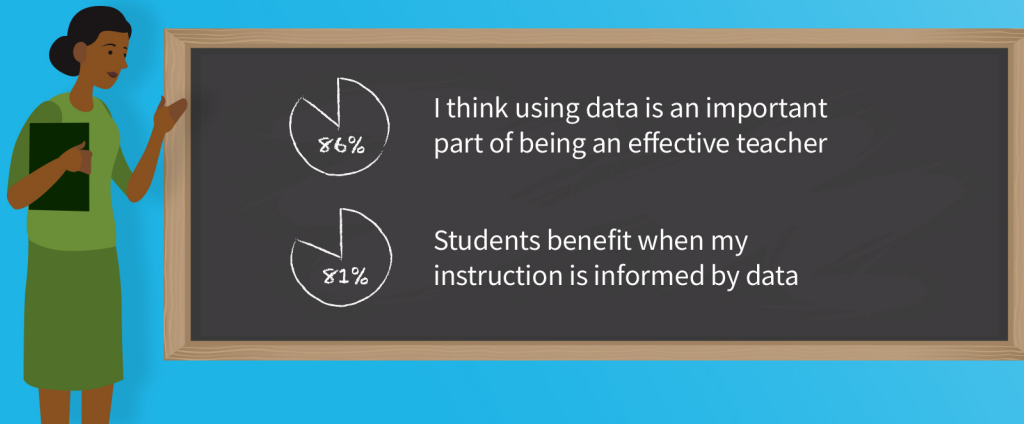
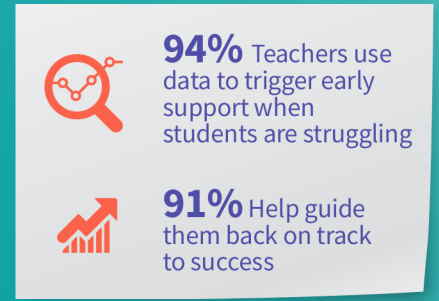


Teachers See the Power of Data—But Don't Have Enough Time to Use It

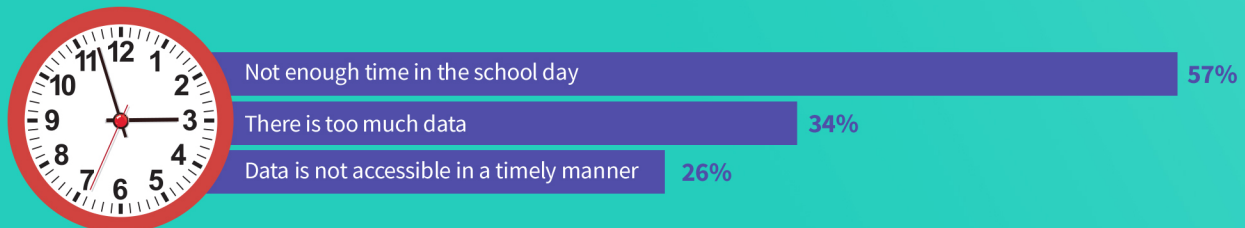
95% of teachers use a combination of academic data (test scores, graduation rates, etc.) and nonacademic data (attendance, classroom behavior, etc.) to understand their students' performance.



Teachers use different types of data to improve teaching and learning.



Teachers continue to face barriers when it comes to effective data use.



It's up to school and district leaders to take action. Of teachers polled, 46% say principals and 44% say district leadership or superintendents are most responsible for ensuring teachers have the time they need to use data.

Parents & Teachers Agree: Data Is Key to Supporting Students

Parents* value data as a key resource to inform their decisions.

95% of parents

support teachers' use of data to make sure that their students are getting all the support they need, up from 90% in 2015

93% of parents

need data so they can help their children do their best

90% of parents

say a school's performance rating helps them make decisions related to their child's education

Teachers use data to plan and enhance their instruction.

Of teachers polled:



identify learning goals



know what concepts students learn



plan instruction

Potential of Personalization:



89% of teachers say they use data to customize learning for each student's unique needs, something 94% of parents are looking for

Parents increasingly trust educators to use their child's data appropriately.

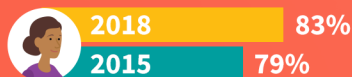
Teacher



Principal



Guidance Counselor



87%

trust that their child's school is keeping their child's data private and secure, up from 81% in 2015

Teachers value data as a door opener with parents.



86%

data helps communicate with parents about their children's performance



85%

data gives an objective place to start conversations

And they're looking for schools to share even more:



75%

want their school to do a better job getting parents information about their students' progress in school

States have a role to play in creating a culture of data use that puts students at the center. To see how, check out DQC's [Four Policy Priorities to Make Data Work for Students](#).

*Throughout this infographic "parents" refers to those who have children age 5-17 who are currently in school.

SOURCE: Online surveys conducted within the United States by The Harris Poll on behalf of Data Quality Campaign: May 23-26, 2018, among 762 full-time K-12 grade teachers, May 17-21, 2018, among 914 parents of children ages 5-17, 842 of whom had children attending school, November 6-16, 2015 among 1,093 parents of children ages 5-17, 1,032 of whom had children attending school. For more information, please contact: info@dataqualitycampaign.org